

OSA PRODUCTS

CONTENTS

A – CPAP Systems

	<i>Page Number</i>
• SleepStyle™ 200 AUTO Series	A1
• SleepStyle™ 200 CPAP Series	A3
• SleepStyle™ 600 CPAP Series	A7
• CPAP Accessories	A8 – A10
• Conversion Kits	A11

B – Heated Humidifiers

• HC150 Heated Humidifier with Ambient Tracking™	B1
• HC150 Accessories	B2 – B3
• Humidification Starter Kit	B4

C – Interfaces

NASAL MASKS AND SPARE PARTS

• Zest™ Nasal Masks	C1 – C2
• FlexiFit™ 407 Nasal Mask	C3 – C4
• FlexiFit™ 406 Petite Nasal Mask	C5 – C6
• FlexiFit™ 405 Nasal Mask	C7 – C9
• Aclaim™ 2 Nasal Mask	C10 – C12

FULL FACE MASK AND SPARE PARTS

• Forma™ Full Face Masks	C13 – C17
• FlexiFit™ 431 Full Face Mask	C18 – C19
• FlexiFit™ 432 Full Face Mask	C20 – C22

DIRECT NASAL MASK AND SPARE PARTS

• Opus™ ³⁶⁰ Nasal Pillows Mask	C23 – C24
---	-----------

ORAL MASK AND SPARE PARTS

• Oracle™ 452 Oral Mask	C25 – C28
-------------------------	-----------

Fisher & Paykel Healthcare Directory

For Ventilation Products and Spare Parts please refer to the Respiratory Humidification Products Catalogue:

Code 185041030

Code 185042153 (US & Canada)

Please note: Some parts and/or products listed in this catalogue may not be available in all countries.

AutoCPAP Systems

SleepStyle™ 200 Auto Series



The **SleepStyle™ 200 Auto Series** is a truly integrated AutoCPAP flow generator designed for use in the home or sleep laboratory, for the treatment of OSA. The **SleepStyle™ 200 Auto Series** delivers outstanding clinical, patient-care and commercial results due to its innovative SensAwake™ Technology. SensAwake™ Technology senses the critical awake state of patients and reduces the pressure to facilitate the return to sleep.

The features of the **SleepStyle™ 200 Auto Series** include:

- Auto-adjusting pressure technology for effective titration and long-term treatments
- SensAwake™ Technology to personalize therapy during sleep and awake states
- Leak Management
- Ambient Tracking™ Plus, patented technology for humidification under changing conditions
- SmartStick™ Technology to allow download of patient treatment data via removable media
- PerformanceMaximizer™ Software for treatment efficacy reporting and patient management
- Fully integrated design for simple and reliable operation
- Combination of Auto and CPAP technology to treat patients in the most suitable mode

Specifications	Description
Dimensions	10.8" x 6.7" x 5.5" (275mm x 170mm x 140mm)
Weight	4.2 lb (1.9 kg)
Chamber Capacity	400mL
Electrical Rating:	
• Supply Voltage	Mains voltage automatically detected, 100 to 240V
• Pressure Range	4 to 20 cmH ₂ O

AutoCPAP Systems

Package content of the *SleepStyle™ 200 Auto Series* includes:

Product Code	Description	Quantity
HC254	<p>SleepStyle™ 200 AutoCPAP Series with SensAwake™ Technology</p> <p>Includes:</p> <ul style="list-style-type: none"> ● Carry Bag ● Water Funnel ● Connector ● HC385S Water Chamber - Standard or HC355 Water Chamber - Extended life* ● 900HC221 Tube - To fit 0.86" (22mm) conical connector ● 900HC240 Filter ● SmartStick™ ● SmartStick™ Mailer 	<p>1</p> <p>1</p> <p>1</p> <p>2</p> <p>1</p> <p>1</p> <p>1</p> <p>1</p>

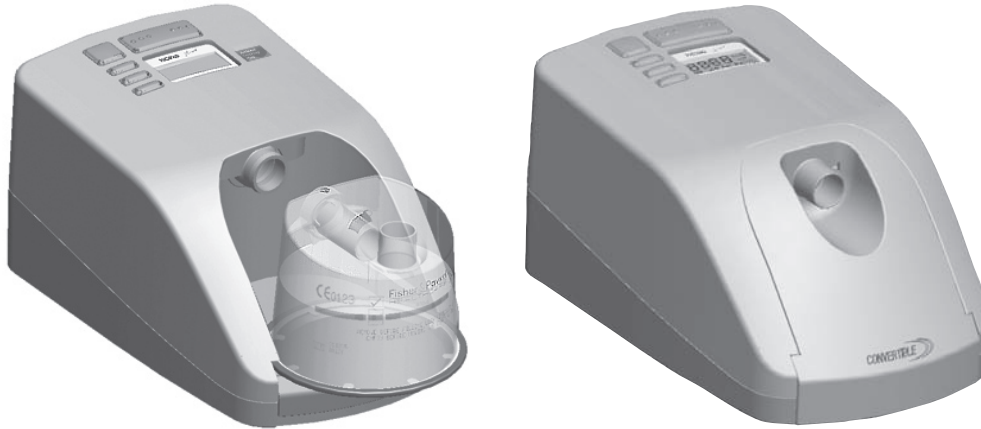
* Not available in all countries.

Accessories available with the *SleepStyle™ 200 Auto Series*:

Product Code	Description	Quantity
900HC615	PerformanceMaximizer™ Software	1
900HC236	Isolated Serial Adapter	1
900HC323	Serial Cable	1
900HC226	Extension Cable	1
900HC611	SmartStick™ (5 pack)	1
900HC630	SmartStick™ Mailers (25 pack)	1

CPAP Systems

SleepStyle™ 230 CPAP Series



The **SleepStyle™ 230 Series** is a comprehensive range of standard and truly integrated flow generators for the treatment of OSA. Its versatile design can deliver comfortable and effective therapy to meet changing therapy needs cost effectively.

The features of the **SleepStyle™ 230 Series** include:

- Ambient Tracking™ Plus, patented technology for auto-adjusting humidification
- Convertible CPAP therapy for cold and heated (activated electronically) humidification to meet changing therapy needs
- Fully integrated design for simple and reliable operation
- Intuitive navigation menu
- Patient compliance monitoring

Specifications	Description
Dimensions	10.8" x 6.7" x 5.5" (275mm x 170mm x 140mm)
Weight	4.2 lb (1.9kg)
Chamber Capacity	400mL
Electrical Rating:	
• Supply Voltage	Mains voltage automatically detected
• Pressure Range	4 to 20 cmH ₂ O

CPAP Systems

Feature	Units					
	HC231	HC232	HC233	HC234	HC236	HC238
Standard	✓	✓			✓	
Fully Integrated CPAP with Heated Humidification			✓	✓		✓
Patient Compliance Monitoring (LCD & Full Download)		✓		✓	✓	✓
Auto-Altitude Adjustment					✓	✓
Leak Compensation					✓	✓
Ambient Tracking™ Plus			✓	✓		✓
Proportional Ramp	✓	✓	✓	✓	✓	✓

NB: Some models may not be available for sale in certain countries.

STANDARD CPAP models also include:

Product Code	Description	Quantity
HC231 } HC232 } HC236 }	900HC221 - Breathing Tube	1
	900HC240 - Air Filter	1
	Carry Bag	1

FULLY INTEGRATED CPAP models also include:

Product Code	Description	Quantity
HC233 } HC238 } HC234 }	HC385S - Water Chamber (standard)	2
	900HC010 - Connector	1
	900HC221 - Breathing Tube	1
	900HC240 - Air Filter	1
	Water Funnel	1
	Carry Bag	1

SLEEPSTYLE™ 200 CPAP SERIES CONVERSION KIT (FOR HC231, HC232, HC236)

Product Code	Description	Quantity
HC013	Conversion from Standard CPAP to Cool Humidification	1
HC014	Conversion from Standard or Cool Humidification to Heated Humidification	1
HC015	Conversion from Heated Humidification back to Standard CPAP	1

CPAP Systems

SleepStyle™ 240 CPAP Series



The **SleepStyle™ 240 Series** offers a range of truly integrated CPAP devices with Performance Monitoring capability and removable media.

The features of the **SleepStyle™ 240 Series** include:

- Ambient Tracking™ Plus, patented technology for auto-adjusting humidification
- Fully integrated design for simple and reliable operation
- Intuitive navigation menu
- Patient compliance monitoring
- SmartStick™ removable media utilising USB technology
- Efficacy data (AHI, Leak)

Specifications	Description
Dimensions	10.8" x 6.7" x 5.5" (275mm x 170mm x 140mm)
Weight	4.2 lb (1.9kg)
Chamber Capacity	400mL
Electrical Rating:	
• Supply Voltage	Mains voltage automatically detected
• Pressure Range	4 to 20 cmH ₂ O

CPAP Systems

Feature	Units	
	HC242*	HC244
Fully Integrated CPAP with Heated Humidification	✓	✓
Ambient Tracking™ Plus Technology	✓	✓
Compliance Data	✓	✓
Efficacy data (AHI/leak)		✓
SmartStick™ Technology	✓	✓
Manual Altitude Adjustment Control	✓	✓

* Not available in all countries.

Package content of the **SleepStyle™ 200 Series** includes:

Product Code	Description	Quantity
HC254	SleepStyle™ 200 CPAP Series with SensAwake™ Technology	
	Includes:	
	• Carry Bag	1
	• Water Funnel	1
	• Connector	1
	• HC385S Water Chamber - Standard	2
	• or HC355 Water Chamber - Extended life*	1
	• 900HC221 Tube - To fit 0.86" (22mm) conical connector	1
	• 900HC240 Filter	1
• SmartStick™	1	
• SmartStick™ Mailer	1	

* Not available in all countries.

Accessories available with the **SleepStyle™ 200 Series**:

Product Code	Description	Quantity
900HC615	PerformanceMaximizer™ Software	1
900HC611	SmartStick™ (5 pack)	1
900HC630	SmartStick™ Mailers (25 pack)	1

CPAP Systems

SleepStyle™ 600 CPAP Series with ThermoSmart™ Technology



The **SleepStyle™ 600 CPAP Series** is a truly integrated Continuous Positive Airway Pressure (CPAP) generator with a heated humidifier, designed for the treatment of Obstructive Sleep Apnea (OSA) in adult patients.

The **SleepStyle™ 600 CPAP Series** includes ThermoSmart™ Technology, a unique Fisher & Paykel Healthcare technology that allows for optimum levels of humidity independent of room temperature.

SleepStyle™ 600 CPAP Series also features Automatic voltage detection, DC inverter compatibility and manual altitude adjustment.

Specifications	Description
Dimensions	10.7" x 6.7" x 6.9" (273mm x 170mm x 175mm)
Weight (with Chamber)	2.1kg (3.4kg packaged in bag incl accessories)
Electrical Rating:	
<ul style="list-style-type: none"> Supply Voltage Inverter 	Mains voltage automatically detected 115V - 200W/300W surge 230V - 300W/500W surge
<ul style="list-style-type: none"> Pressure Range 	4 to 20 cmH ₂ O

SleepStyle™ 600 Series products also include:

Product Code	Description	Quantity
HC604 HC608	SleepStyle™ CPAP Series with ThermoSmart™ Technology Includes: <ul style="list-style-type: none"> Carry Bag Water Funnel HC365S Water Chamber - Standard or HC360 Water Chamber - Extended life* 900HC522 ThermoSmart™ Heated Breathing Tube 900HC240 Filter 	1 1 2 1 1 1

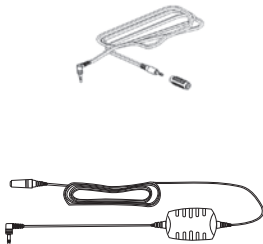
The following table lists the main difference in features across the **SleepStyle™ 600** product range.

Model	Fully Integrated CPAP with Heated Humidification	Patient Compliance Monitoring (LCD and Download)	Auto-Altitude Adjustment/ Leak compensation
HC604	✓	✓	-
HC608*	✓	✓	✓

* Some models not available in all countries.

CPAP Systems - Accessories

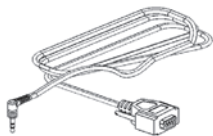
Titration Maximizer™



PC - Remote Control

Product Code	Description	Quantity
900HC607	TitrationMaximizer™ is a software package for titration purposes. The software allows the PC to be used as a remote control to set the therapeutic pressure of the CPAP device. To be used in conjunction with 900HC236	1
900HC226	Lead Extension Kit A 32.8' (10m) extension lead	1
900HC236	Isolation Serial Adapter	1

Compliance Maximizer™



Compliance Monitoring

Product Code	Description	Quantity
900HC230	ComplianceMaximizer™ is a software package for storing and downloading patient CPAP usage data and humidity setting from any Fisher & Paykel Healthcare CPAP device with this feature. The LCD report enables remotely located patients to record and report their compliance information. To be used with 900HC232.	1
900HC232	Compliance Download Serial Cable: A 6.5' (2m) serial cable for downloading compliance data	1

Performance Maximizer™



Software - Efficacy Reporting

Product Code	Description	Quantity
900HC615	PerformanceMaximizer™ is a software package for efficacy reporting which offers detailed reporting on therapy effectiveness. PerformanceMaximizer™ has been designed for enhanced patient management by healthcare professionals.	1

SmartStick™

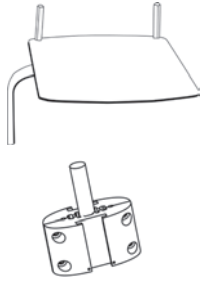


SmartStick™ (5 Pack)

Product Code	Description	Quantity
900HC611	SmartStick™ utilizes generic USB technology (Models HC254, 242, 244 only)	5
900HC630	SmartStick™ Mailer	25

CPAP Systems - Accessories

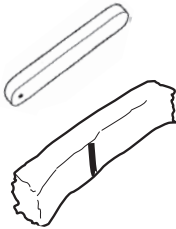
Mounting Bracket and Tray for attaching/supporting a CPAP unit to a pole.



Product Code	Description	Quantity
900HC033	CPAP Mounting Tray Suitable for HC220, HC230 and HC600 Series CPAP	1
900MR030	Pole Clamp For mounting the CPAP to a .6" x 1.9" (15 to 50mm) pole To be used with 900HC033 Mounting Tray	1

Air Filters

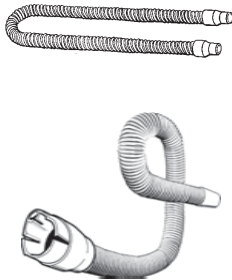
Graduated filters, designed to remove airborne particles.



Product Code	Description	Quantity
900HC288	Air Filter (HC210/HC220LE Series)	2
900HC240	Air Filter (SleepStyle™)	2

Tubes

Tubing to connect the water chamber to the mask.



Product Code	Description	Quantity
900HC221	Tube 72" (183cm) Suitable for HC220LE Series and HC230 Series Humidified CPAP System Includes 900HC010 Connector	1
900HC522	ThermoSmart™ Heated Breathing Tube	1

Water Funnel

A funnel to help fill the water chamber without spillage.



Product Code	Description	Quantity
900HC225	Water Funnel	10 Pack
900HC627	Elbow Funnel	10 Pack

Spare-Shroud

For convertible CPAP therapy of the SleepStyle™ 230 Series



Product Code	Description	Quantity
900HC629	Spare-Shroud HC230 Convertible	Each

CPAP Systems - Accessories

Water Chambers

For generating humidity. Designed for simplified fitting and cleaning.



Product Code	Description	Quantity
HC355* <small>*Not available in all countries</small>	Extended Life Humidification Chamber Suitable for HC220LE and SleepStyle™ 200 CPAP Series Removable base dishwasher safe, non-autoclavable 13.2 fluid ounces (400ml) capacity	1
HC365S	Standard Humidification Chamber Suitable for SleepStyle™ 600 CPAP Series Disposable 19.8 fluid ounces (600ml) capacity	10 Pack
HC360* <small>*Not available in all countries</small>	Extended Life Humidification Chamber Suitable for SleepStyle™ 600 CPAP Series Removable base, dishwasher safe, non-autoclavable 19.8 fluid ounces (600ml) capacity	1
HC385S	Standard Humidification Chamber Suitable for HC220LE and SleepStyle™ 200 Disposable 13.2 fluid ounces (400ml) capacity	10 Pack

CPAP Systems

Conversion Kits

HC014 Heated
Humidification Conversion Kits



Each Conversion Kit is supplied with simple instructions for the quick adjustment of your CPAP to meet your humidification requirements.

Product Code	Description	Quantity
HC014* *All markets	Heated Humidification Conversion Kit (HC230 Series) Consists of: <ul style="list-style-type: none">● Hood Conversion Key● Humidifier Activation Key● Water Chamber● Water Funnel● SleepStyle™ 200 Series Operating Manual● Instruction Sheet	1 1 2 1 1 1

Product Code	Description	Quantity
HC015* *All markets	Cold Humidification Conversion Kit (HC230 Series) Consists of: <ul style="list-style-type: none">● Humidifier Deactivation Key● Instruction Sheet	1 1

Heated Humidifiers

HC150 Heated Humidifier with Ambient Tracking™



The HC150 adds heated humidification to standard CPAP therapy, maintaining mucosal hydration and preventing discomfort. The HC150 is equipped with Ambient Tracking™, an auto-adjusting heated humidifier that maximizes humidity and minimizes condensation to deliver a more comfortable therapy.

The HC150 can be used with any CPAP or bi-level system.

Recommended for use with the 900HC105 Starter Kit.

Specifications	Description
Dimensions	2.1" x 5.2" x 5.7" (54mm x 132mm x 146mm)
Weight	1.8 lb (0.8kg) with chamber
Chamber Capacity	450/480ml to recommended fill level
Electrical Rating:	
<ul style="list-style-type: none"> • Voltage Supply • DC Inverter Compatible 	Model available for all major mains voltage

Product Code	Description	Quantity
HC150	Heated Humidifier	1
HC150 pack* *USA and Canada	Pack includes: <ul style="list-style-type: none"> • HC150 Heated Humidifier • 900HC105 Starter Kit 	1 1

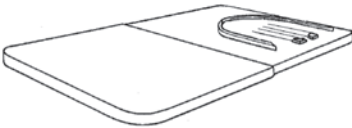
HC150 - Accessories

Connector



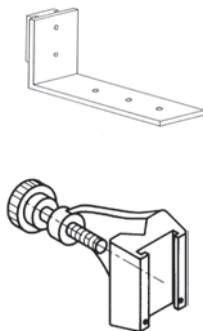
Product Code	Description	Quantity
900HC010	Joins the tube to the chamber eliminating strain to the tube	1
900MR530	Connects the HC300 chamber to the 900HC009 tube It is autoclavable and designed for long-term use	1

Folding Tray



Product Code	Description	Quantity
900HC007	To be used to secure any CPAP Blower to a HC150 heated humidifier or HC325S chamber	1

Mounting Bracket and C-Clamp



Product Code	Description	Quantity
900HC006	Bracket for use with the 900MR170 clamp	1
900MR170	C-Clamp used to position a Humidifier onto a pole (19 to 40mm diameter) To be used with the 900HC006 Mounting Bracket	1

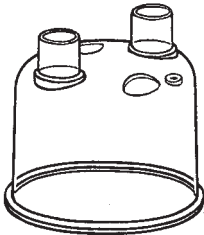
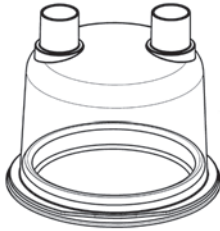
HC150 - Accessories

Tubes



Product Code	Description	Quantity
900HC008	Tube 24" (61cm) connecting CPAP Blower to water chamber	1
	Includes 900HC010 Connector	2
900HC009	Tube 24"(61cm) connecting CPAP Blower to HC300 chamber	1
	Autoclavable, multi-patient use Includes 900MR530 Connector	2
900HC221	Tube 72"(183cm) connecting water chamber to mask.	1
	Includes 900HC010 Connector.	1

Water Chambers



Product Code	Description	Quantity
HC300	Extended Life Humidification Chamber Kit Suitable for use with the HC150 Heated Humidifier Removable base, dishwasher safe, non autoclavable Includes: <ul style="list-style-type: none"> ● HC300 Chamber (450ml capacity) ● 900HC008 Tube 24"(61cm) ● 900HC010 Connector 	1
		1
		2
		2
HC325S	Standard Humidification Chamber Suitable for HC150 Humidifier and 900HC105 Starter Kit Disposable 480ml capacity	10 Pack.

Humidification Starter Kit

Humidification Starter Kit 900HC105

The Fisher & Paykel Healthcare Humidification Starter Kits are designed to make it easy for CPAP or bi-level users to be introduced to humidification. The kit can be used on its own as a cold passover humidification system (see Figure a below). If higher levels of humidification are required, it can be easily upgraded to a heated humidification system (see Figure b below). The HC150 Heated Humidifier and HC325S Humidification Chamber are easily attached to the 900HC007 Folding Tray.

(a) Cold Passover Humidification System

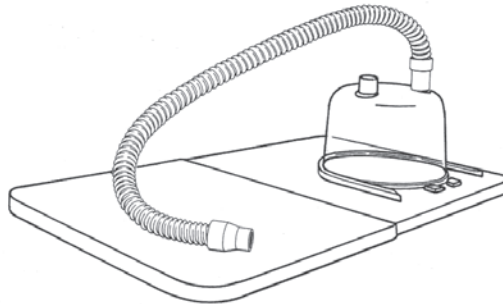


Figure a

(b) Heated Humidification System

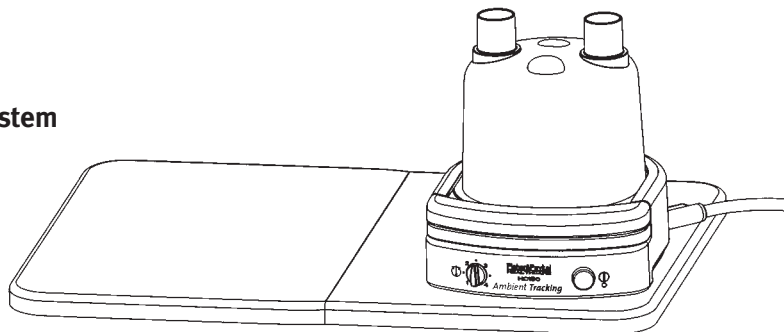


Figure b

Product Code	Description	Quantity
900HC105	Starter Kit includes: <ul style="list-style-type: none">● 900HC007 Folding Tray● HC325S Water Chambers (Standard)● 900HC008 Tube● 900HC010 Connectors● Mounting Screws	1 2 1 2 2

Interfaces

Zest™ Nasal Mask



Small, quiet and effortless to fit and use, the **Zest™** Nasal Mask offers superb comfort with its innovative design.

The **Zest™** Nasal Mask includes the following features:

- **FlexiFit™** Technology provides a greater range of movement at the nasal bridge, simplifying the fitting process while improving the seal and comfort.
- The unique **Glider™** Strap provides freedom of movement while maintaining a seal.
- The **Easy-Clip Silicone Seal** allows one-step connection or removal for quick and effortless cleaning. **Variable Thickness Silicone** (VTS™) provides an ultra-soft fit for improved sealing and comfort.
- **Stretchgear™** Headgear is breathable, maximizes comfort and minimizes facial pressure during head movement.
- Designed and contoured using the Fisher & Paykel Healthcare Anthropometric Database.*
- Fully assembled for a complete and simple Out-of-Box Solution.
- Available in three sizes: **Zest™ Petite**, **Zest™** and **Zest™ Plus**.

Product Code	Description	Quantity
400440 Zest™	Zest™ Nasal Mask includes:	
400439 Zest™ Petite	• Easy-Clip Silicone Seal	1
400441 Zest™ Plus	• Foam Cushion	1
	• Stretchgear™ Headgear	1
	• Glider™ Strap	1

* The **Zest™** fits 80% of normal population according to the Fisher & Paykel Healthcare Anthropometric Database. The **Zest™** Petite and **Zest™** Plus Nasal Mask fit the remainder of the population.

Zest™ Mask Spare Parts



Elbow Kit

Product Code	Description	Quantity
400HC221	Elbow Zest™ and Swivel	1 of Each



Foam Cushion

Product Code	Description	Quantity
400HC008	Foam Cushion Zest™	Each
400HC009	Foam Cushion Zest™ Petite	Each
400HC010	Foam Cushion Zest™ Plus	Each



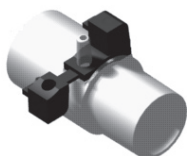
Easy-Clip Silicone Seal and Foam Cushion

Product Code	Description	Quantity
400HC542	Single Foam and Silicone Seal Zest™	Each
400HC557	Single Foam and Silicone Seal Zest™ Petite	Each
400HC558	Single Foam and Silicone Seal Zest™ Plus	Each



Swivel Connector

Product Code	Description	Quantity
900HC438	Swivel Connector - Female	10 Pack



Oxygen/Pressure Port Connector

Product Code	Description	Quantity
900HC452	Oxygen/Pressure Port Connector	10 Pack



Forehead Pads

Product Code	Description	Quantity
900HC423	Forehead Pads	2 Pack



Glider™ Strap

Product Code	Description	Quantity
900HC418	Glider™ Strap	10 Pack



Mask Headgear

Product Code	Description	Quantity
400HC314	Stretchgear™ Headgear Zest™	Each
400HC316	Stretchgear™ Headgear Zest™ Petite	Each



Mask - No Headgear

Product Code	Description	Quantity
400HC543	Zest™ Mask - No Headgear	Each
400HC559	Zest™ Mask - No Headgear Petite	Each
400HC560	Zest™ Mask - No Headgear Plus	Each

Interfaces

FlexiFit™ 407 Nasal Mask



The *FlexiFit™* 407 Nasal Mask, developed using our anthropometric database of thousands of facial contours, provides a better fit and superior comfort while maintaining the proven ease-of-use features common to the Fisher & Paykel Healthcare masks.

- *FlexiFit™* Technology provides a greater range of movement at the nasal bridge, simplifying the fitting process while improving the seal and comfort.
- The unique *Glider™* Strap for freedom of movement while maintaining a seal.
- *Stretchgear™* Headgear is breathable, maximizes comfort and minimizes facial pressure during head movement.
- Designed and contoured especially to meet the goal of "one size to fit most".*
- Fully assembled for a complete and simple Out-of-Box Solution.

Product Code	Description	Quantity
HC407	<i>FlexiFit™</i> 407 Nasal Mask includes: <ul style="list-style-type: none">• Silicone Seal (one size)• Foam Cushion• Headgear• <i>Glider™</i> Strap	1 1 1 1

* The *FlexiFit™* Nasal Mask fits 80% of normal population according to the Fisher & Paykel Healthcare Anthropometric Database.

FlexiFit™ 407 Mask Spare Parts



Elbow Kit

Product Code	Description	Quantity
400HC202	Elbow Non-Diffuser (Holes) plus Swivel	1 of Each
400HC200	Elbow Non-Diffuser (Holes) plus Swivel	10 of Each
900HC441	Elbow Plus Diffuser material, Swivel	1 of Each



Foam Cushion

Product Code	Description	Quantity
400HC002	Foam FlexiFit™ 407	1 of Each



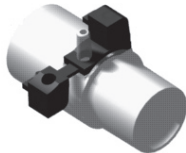
Foam Cushion and Silicone Seal

Product Code	Description	Quantity
400HC501	Single Foam and Silicone Seal FlexiFit™ 407	1 of Each



Swivel Connector

Product Code	Description	Quantity
900HC438	Swivel Connector - Female	10 Pack



Oxygen/Pressure Port Connector

Product Code	Description	Quantity
900HC452	Oxygen/Pressure Port Connector	10 Pack



Forehead Pads

Product Code	Description	Quantity
900HC423	Forehead Pads - Fits FlexiFit™ Masks	2 Pack



Glider™ Strap

Product Code	Description	Quantity
900HC418	Glider™ Strap - Fits FlexiFit™ Masks	10 Pack



Mask Headgear

Product Code	Description	Quantity
400HC301	Stretchgear™ Headgear FlexiFit™ 407	1 of Each



Mask Kit

Product Code	Description	Quantity
400HC502	FlexiFit™ 407 Mask - No Headgear	1 of Each

Interfaces

FlexiFit™ 406 Petite Nasal Mask



The *FlexiFit™* 406 Petite Nasal Mask, developed using our anthropometric database of thousands of facial contours, provides a better fit and superior comfort for those with finer features. The *FlexiFit™* 406 Petite Nasal Mask includes the following:

- *FlexiFit™* Technology provides a greater range of movement at the nasal bridge, simplifying the fitting process while improving the seal and comfort.
- The unique *Glider™* Strap for freedom of movement while maintaining a seal.
- *Stretchgear™* Headgear is breathable, maximizes comfort and minimizes facial pressure during head movement.

Product Code	Description	Quantity
HC406	<i>FlexiFit™</i> 406 Nasal Mask includes: <ul style="list-style-type: none">• Silicone Seal (one size)• Foam Cushion• Headgear• <i>Glider™</i> Strap	1 1 1 1

FlexiFit™ 406 Mask Spare Parts



Elbow Kit

Product Code	Description	Quantity
400HC202	Elbow Non-Diffuser (Holes) plus Swivel	1 of Each
400HC200	Elbow Non-Diffuser (Holes) plus Swivel	10 of Each
900HC441	Elbow Plus Diffuser material, Swivel	1 of Each



Foam Cushion

Product Code	Description	Quantity
400HC003	Foam FlexiFit™ 406	Each



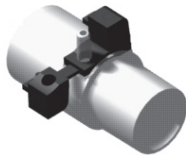
Foam Cushion and Silicone Seal

Product Code	Description	Quantity
400HC509	Single Foam and Silicone Seal FlexiFit™ 406	Each



Swivel Connector

Product Code	Description	Quantity
900HC438	Swivel Connector - Female	10 Pack



Oxygen/Pressure Port Connector

Product Code	Description	Quantity
900HC452	Oxygen/Pressure Port Connector	10 Pack



Forehead Pads

Product Code	Description	Quantity
900HC423	Forehead Pads - Fits FlexiFit™ Masks	2 Pack



Glider™ Strap

Product Code	Description	Quantity
900HC418	Glider™ Strap - Fits FlexiFit™ 405, 406, 407	10 Pack



Mask Headgear

Product Code	Description	Quantity
400HC307	Stretchgear™ Headgear FlexiFit™ 406	Each



Mask Kit

Product Code	Description	Quantity
400HC510	FlexiFit™ 406 Mask - No Headgear	Each

Interfaces

FlexiFit™ 405 Nasal Mask



The *FlexiFit™* 405 Nasal Mask has several unique features that provide a breakthrough in comfort and flexibility as follows:

- *FlexiFit™* Technology to automatically adjust and accommodate a wider range of face shapes.
- The unique *Glider™* Strap creates stability without restricting head movement.
- Breathable Headgear which is cool, lightweight and comfortable.
- Easy-to-use "Fit and Forget" technology.
- Second-sized Silicone Seal included for a complete Out-of-Box Solution.

Product Code	Description	Quantity
HC405	<p><i>FlexiFit™</i> 405 Nasal Mask includes:</p> <ul style="list-style-type: none">• Silicone Seal (Small)• Silicone Seal (Large)• Foam Cushion• Headgear (one size fits all)• Bias Flow Diffuser Cap plus Spare• Bias Flow Diffuser Material plus Spares• <i>Glider™</i> Strap	<p>1</p> <p>1</p> <p>1</p> <p>1</p> <p>2</p> <p>6</p> <p>1</p>

FlexiFit™ 405 Mask Spare Parts



Diffuser

Product Code	Description	Quantity
900HC439	Diffuser Kit FlexiFit™ 405	10 Pack



Diffuser Caps

Product Code	Description	Quantity
900HC440	Diffuser Caps FlexiFit™ 405	10 Pack



Elbow Kit

Product Code	Description	Quantity
900HC441	Elbow Plus Diffuser material, Swivel	1 of Each
400HC202	Elbow Non-Diffuser (Holes) plus Swivel	1 of Each
400HC200	Elbow Non-Diffuser (Holes) plus Swivel	10 of Each



Foam Cushion

Product Code	Description	Quantity
900HC426	Foam Cushion - Fits FlexiFit™ 405	Each



Silicone Seal

Product Code	Description	Quantity
900HC436	Silicone Seal Small - Fits FlexiFit™ 405	Each
900HC437	Silicone Seal Large - Fits FlexiFit™ 405	1 of Each



Foam Cushion and Silicone Seal Combo

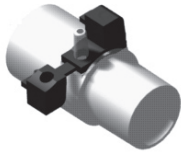
Product Code	Description	Quantity
900HC427	Nasal Mask Foam and Seal (Small) - Fits FlexiFit™ 405	Each
900HC428	Nasal Mask Foam and Seal (Large) - Fits FlexiFit™ 405	Each

FlexiFit™ 405 Mask Spare Parts



Swivel Connector

Product Code	Description	Quantity
900HC438	Swivel Connector - Female	10 Pack



Oxygen/Pressure Port Connector

Product Code	Description	Quantity
900HC452	Oxygen/Pressure Port Connector	10 Pack



Diffuser

Product Code	Description	Quantity
900HC423	Forehead Pads - Fits FlexiFit™ Masks	2 Pack



Glider™ Strap

Product Code	Description	Quantity
900HC418	Glider™ Strap - Fits FlexiFit™ 405, 406, 407	10 Pack



Mask Headgear

Product Code	Description	Quantity
900HC429	FlexiFit™ 405 Mask - Headgear	Each



Mask Kit

Product Code	Description	Quantity
900HC406	FlexiFit™ 405 Mask - No Headgear	Each

Interfaces

*Aclaim*TM 2 Nasal Mask



The *Aclaim*TM 2 Nasal Mask has several unique features that ensure a quick easy fit and an effective mask seal.

The unique *Glider*TM Strap holds the mask gently but securely to the patient's face while still allowing the patient to move freely. The diffuser mechanism reduces draft created by the bias flow, making the CPAP system much quieter.

The *Aclaim*TM 2 Nasal Mask comes fully assembled with Breathable Headgear that allows the patient's head to "breathe" during the night.

The *Aclaim*TM 2 is supplied with both sizes of Silicone Seal in each box.

Product Code	Description	Quantity
HC401	<i>Aclaim</i> TM 2 Nasal Mask includes: <ul style="list-style-type: none">• Silicone Seal (Small)• Silicone Seal (Large)• Headgear (one size fits all)• Bias Flow Diffuser Cap plus Spare• Bias Flow Diffuser Material plus Spares• <i>Glider</i>TM Strap	1 1 1 2 6 1

Aclaim™ 2 Mask Spare Parts



Diffuser

Product Code	Description	Quantity
900HC416	Diffuser - Fits Aclaim™ 2	10 Pack



Diffuser Caps

Product Code	Description	Quantity
900HC420	Diffuser Caps - Fits Aclaim™ 2	10 Pack



Foam Cushion

Product Code	Description	Quantity
900HC426	Foam Cushion - Fits FlexiFit™ 405	Each



Silicone Seal

Product Code	Description	Quantity
900HC436	Silicone Seal Small - Fits FlexiFit™ 405	Each
900HC437	Silicone Seal Large - Fits FlexiFit™ 405	1 of Each



Foam Cushion and Silicone Seal

Product Code	Description	Quantity
900HC427	Nasal Mask Foam and Seal (Small) - Fits FlexiFit™ 405	Each
900HC428	Nasal Mask Foam & Seal (Large) - Fits FlexiFit™ 405	Each



Foam Cushion

Product Code	Description	Quantity
900HC438	Swivel Connector - Female	10 Pack

Aclaim™ 2 Mask Spare Parts



Oxygen/Pressure Port Connector

Product Code	Description	Quantity
900HC452	Oxygen/Pressure Port Connector	10 Pack



Forehead Pads

Product Code	Description	Quantity
900HC423	Forehead Pads - Aclaim™ 2, FlexiFit™ Nasal Masks	2 Pack



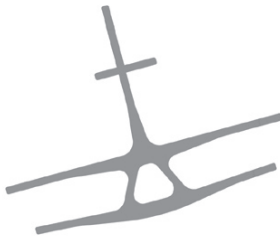
Glider™ Strap

Product Code	Description	Quantity
900HC418	Glider™ Strap - Aclaim™ 2, FlexiFit™ Nasal Masks	10 Pack



Flexitube Kit

Product Code	Description	Quantity
900HC412	Aclaim™ 2 Flexitube Kit	Each



Mask Headgear

Product Code	Description	Quantity
900HC403	Aclaim™ 2 Headgear	Each



Mask Kit

Product Code	Description	Quantity
900HC402	Aclaim™ 2 Mask - No Headgear	Each

Interfaces

Forma™ Full Face Mask



The **Forma™** Full Face Mask forms a superior seal and provides even more comfort with a greater range of movement through the active contouring of its new **FlexiFoam™** Cushion. The T-Piece adds stability to the stylized Mask Base, and works in harmony with the highly contoured Silicone Seal and Under-Chin Design to enhance sleep performance.

The **Forma™** Full Face Mask includes the following features:

- Simple one-step auto-adjustment fitting using **FlexiFit™** Technology.
- The unique **FlexiFoam™** Cushion is an Active-contouring cushion that is light and supportive to provide greater comfort.
- The unique **Glider™** Strap provides freedom of movement while maintaining a seal.
- The Under-Chin Design and Crown Strap provide extra stability and maintain a secure fit even with jaw movement.
- Easy-Release Strap allows simple removal of the mask.
- Fully assembled and available in: Small, Medium and Large (two sizes included) and Extra Large.

Product Code	Description	Quantity
400470 Small	Forma™ Full Face Mask includes:	
400471 Medium & Large	Silicone Seal (Small or Medium and Large or X-Large)	1
400473 X-Large	FlexiFoam™ Cushion (Small or Medium and Large or X-Large)	1
	Headgear with Easy-Release Cord	1
	Glider™ Strap	1

Forma™ Mask Spare Parts



Elbow Kit

Product Code	Description	Quantity
400HC203	Forma™ Elbow and Vented Non-Rebreathing Valve	Each
400HC201	Forma™ Elbow and Non-Rebreathing Valve (Australia only)	Each

Warning: Do not use with Non-Invasive Ventilation models.

FlexiFoam™ Cushion



Product Code	Description	Quantity
400HC011	FlexiFoam™ Cushion with Forma™ Small	Each
400HC012	FlexiFoam™ Cushion with Forma™ Medium	Each
400HC013	FlexiFoam™ Cushion with Forma™ Large	Each
400HC014	FlexiFoam™ Cushion with Forma™ X-Large	Each

FlexiFoam™ Cushion and Silicone Seal



Product Code	Description	Quantity
400HC121	FlexiFoam™ Cushion and Seal Forma™ Small	Each
400HC122	FlexiFoam™ Cushion and Seal Forma™ Medium	Each
400HC123	FlexiFoam™ Cushion and Seal Forma™ Large	Each
400HC124	FlexiFoam™ Cushion and	



Forehead Pads

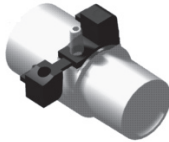
Product Code	Description	Quantity
900HC423	Forehead Pads - Fits Forma™ Masks	2 Pack

Forma™ Mask Spare Parts



Glider™ Strap

Product Code	Description	Quantity
400HC219	Glider™ Strap Plus Full Face Clips	Each



Oxygen/Pressure Port Connector

Product Code	Description	Quantity
900HC452	Oxygen/Pressure Port Connector	10 Pack



Mask Headgear

Product Code	Description	Quantity
400HC315	Forma™ Headgear with Crown Strap	Each
400HC312	Headgear - Tri Glide Buckle	Each



Mask Kit - No Headgear

Product Code	Description	Quantity
400HC552	Forma™ Small Mask - No Headgear	Each
400HC553	Forma™ Medium Mask - No Headgear	Each
400HC554	Forma™ Large Mask - No Headgear	Each
400HC555	Forma™ X-Large Mask - No Headgear	Each
400HC556	Forma™ Mask - No Headgear (Australia and only, Foam Cushion and Silicone Seal not included)	Each

Interfaces

FlexiFit™ 431 Full Face Mask



The ***FlexiFit™* 431** Full Face Mask has an Under-Chin Design and unique features that provide better fit and superior comfort, as follows:

- Simple one-step auto-adjustment fitting using ***FlexiFit™*** Technology.
- The unique ***Glider™*** Strap provides freedom of movement while maintaining a seal.
- The Under-Chin Design and Crown Strap provide extra stability and maintain a secure fit even with jaw movement.
- Easy-Release Strap allows simple removal of the mask.
- "Fit and Forget" Headgear ensures no ongoing adjustments are required.
- Fully assembled, with all three sizes of Silicone Seal in the box.

Product Code	Description	Quantity
HC431	<i>FlexiFit™</i> 431 Full Face Mask includes: <ul style="list-style-type: none">• Silicone Seal (Small)• Silicone Seal (Medium)• Silicone Seal (Large)• Headgear with Easy-Release Cord• <i>Glider™</i> Strap	1 1 1 1 1

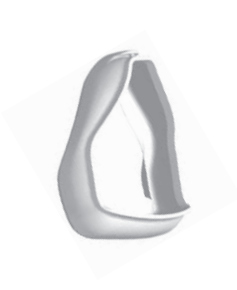
FlexiFit™ 431 Mask Spare Parts



Elbow Kit

Product Code	Description	Quantity
400HC203	FlexiFit™ 431 Elbow and Vented Non-Rebreathing Valve	Each
400HC201	FlexiFit™ 431 Elbow and Non-Rebreathing Valve (Australia only)	Each

Warning: Do not use with Non-Invasive Ventilation models.



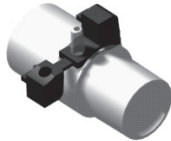
Silicone Seal

Product Code	Description	Quantity
400HC112	Silicone Seal FlexiFit™ 431 Small	Each
400HC104	Silicone Seal FlexiFit™ 431 Medium	Each
400HC103	Silicone Seal FlexiFit™ 431 Large	Each



Forehead Pads

Product Code	Description	Quantity
900HC423	Forehead Pads - FlexiFit™ Masks	2 Pack



Oxygen/Pressure Port Connector

Product Code	Description	Quantity
900HC452	Oxygen/Pressure Port Connector	10 Pack



Mask Headgear

Product Code	Description	Quantity
400HC302	FlexiFit™ 431 Headgear with Crown Strap	Each
400HC312	Headgear - Tri Glide Buckle	Each



Mask Kit

Product Code	Description	Quantity
400HC503	FlexiFit™ 431 Mask - No Headgear	Each
400HC518	FlexiFit™ 431 Mask - No Headgear (Australia only)	Each

Interfaces

FlexiFit™ 432 Full Face Mask



Our second-generation Full Face Mask, the *FlexiFit™* 432, incorporates a soft Foam Cushion that works with the highly contoured Silicone Seal to provide improved sealing technology and a more comfortable fit. This mask includes the following features:

- Simple one-step auto-adjustment fitting using *FlexiFit™* Technology.
- The unique *Glider™* Strap provides freedom of movement while maintaining a seal.
- The Under-Chin Design and Crown Strap provide extra stability and maintain a secure fit even with jaw movement.
- Easy-Release Strap allows simple removal of the mask.
- "Fit and Forget" Headgear ensures no ongoing adjustments are required.
- Fully assembled and available in Small, Medium, Large and Extra Large.

Product Code	Description	Quantity
HC432	<i>FlexiFit™</i> 432 Full Face Mask includes:	
HC432M	• Silicone Seal (Small or Medium or Large or X-Large)	1
HC432L	• Foam Cushion (Small or Medium or Large or X-Large)	1
HC432XL	• Headgear with Easy-Release Cord	1
	• <i>Glider™</i> Strap	1

FlexiFit™ 432 Mask Spare Parts



Elbow Kit

Product Code	Description	Quantity
400HC203	FlexiFit™ 432 Elbow and Vented Non-Rebreathing Valve	Each
400HC201	FlexiFit™ 432 Elbow and Non-Rebreathing Valve (Australia only)	Each

Warning: Do not use with Non-Invasive Ventilation models.



Foam Cushion

Product Code	Description	Quantity
400HC004	Foam Cushion FlexiFit™ 432 Small	Each
400HC005	Foam Cushion FlexiFit™ 432 Medium	Each
400HC006	Foam Cushion FlexiFit™ 432 Large	Each
400HC007	Foam Cushion FlexiFit™ 432 X-Large	Each



Foam Cushion and Silicone Seal Combo

Product Code	Description	Quantity
400HC113	Foam and Seal FlexiFit™ 432 Small	Each
400HC114	Foam and Seal FlexiFit™ 432 Medium	Each
400HC115	Foam and Seal FlexiFit™ 432 Large	Each
400HC119	Foam and Seal FlexiFit™ 432 X-Large	Each



Oxygen/Pressure Port Connector

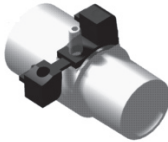
Product Code	Description	Quantity
900HC452	Forehead Pads - Fits FlexiFit™ Masks	2 Pack

FlexiFit™ 432 Mask Spare Parts



Glider™ Strap

Product Code	Description	Quantity
400HC219	Glider™ Strap Plus Full Face Clips	Each



Oxygen/Pressure Port Connector

Product Code	Description	Quantity
900HC452	Oxygen/Pressure Port Connector	10 Pack



Mask Headgear

Product Code	Description	Quantity
400HC309	FlexiFit™ 432 Headgear with Crown Strap	Each
400HC312	Headgear - Tri Glide Buckle	Each

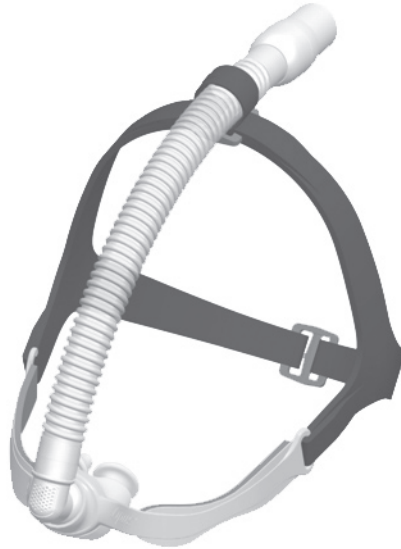


Mask Kit - No Headgear

Product Code	Description	Quantity
400HC519	FlexiFit™ 432 Small Mask - No Headgear	Each
400HC521	FlexiFit™ 432 Medium Mask - No Headgear	Each
400HC522	FlexiFit™ 432 Large Mask - No Headgear	Each
400HC541	FlexiFit™ 432 X-Large Mask - No Headgear	Each
400HC520	FlexiFit™ 432 Small Mask - No Headgear (Australia only)	Each
400HC524	FlexiFit™ 432 Medium (Australia only)	Each
400HC520	FlexiFit™ 432 Large (Australia only)	Each

Interfaces

*Opus*TM360 Nasal Pillows Mask



The *Opus*TM360 Nasal Pillows Mask is small, quiet and superbly comfortable with anatomically designed Silicone Pillows and facially contoured Mask Frame. The following features are included:

- The slim-line design allows for almost any side-sleeping without mask displacement.
- A ball-and-socket-styled joint combines with an innovative anchoring system to give unprecedented stability and freedom of movement.
- "Off-the-lip" Pillows designed for maximum comfort.
- The *Opus*TM360 Nasal Pillows Mask comes as an Out-of-Box Solution, fully assembled and ready to use with alternative sizes of Silicone Pillows included.

Product Code	Description	Quantity
HC482	<i>Opus</i> TM 360 Nasal Pillows Mask includes: <ul style="list-style-type: none">• Contoured Mask Frame and Flexitube Assembly• Headgear• Silicone Seal (Small, Medium and Large)• Male Swivel• Spare Tube Anchoring Strap	1 1 1 1 1

Opus™360 Mask Spare Parts

Silicone Pillows



Product Code	Description	Quantity
400HC116	Silicone Pillows Opus™360 Small	Each
400HC117	Silicone Pillows Opus™360 Medium	Each
400HC118	Silicone Pillows Opus™360 Large	Each

Headgear



Product Code	Description	Quantity
400HC310	Opus™360 Headgear plus spare Tube Anchoring Strap	Each
400HC311	Tube Anchoring Strap	Each
400HC312	Headgear - Tri Glide Buckle	Each
400HC313	Mask Frame	Each

Mask Kit - No Headgear



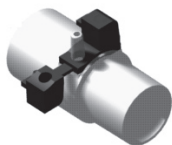
Product Code	Description	Quantity
400HC526	Opus™360 Mask Frame - No Headgear	Each

Swivel Connector



Product Code	Description	Quantity
400HC220	Swivel Connector - Male	Each

Oxygen/Pressure Port Connector



Product Code	Description	Quantity
900HC452	Oxygen/Pressure Port Connector	10 Pack

Interfaces

Oracle™ 452 Oral Mask



The Fisher & Paykel Healthcare **Oracle™ 452** was the first ever developed oral mask, a milestone in mask design. The **Oracle™ 452** delivers pressure through the mouth rather than the nose, offering the patient yet another choice of delivery.

Clinically proven to function as effectively as a nasal mask, the **Oracle™ 452** is a perfect solution for mouth breathers and patients with chronic nasal obstruction who find therapy difficult with a nasal mask. Key features are as follows:

- The symmetrical design means the mask is always correctly fitted.
- The continuously adjustable rotating dial allows for a personalized fit to provide greater comfort and simplicity.
- Breathable Headgear which is cool, lightweight and comfortable.
- Easy-Release Strap and **SnapFlap™** Cover allow simple removal of the mask.

Product Code	Description	Quantity
HC452	Oracle™ 452 Oral Mask includes:	
HC432M	• Flexitube Assembly	1
HC432L	• Silicone Seal (Small)	1
HC432XL	• Silicone Seal (Large)	1
	• Headgear with Easy-Release Cord	1
	• Storage Case	1

Oracle™ 452 Mask Spare Parts



Diffuser

Product Code	Description	Quantity
900HC439	Diffuser also fits FlexiFit™ 405	10 Pack



Diffuser Cap

Product Code	Description	Quantity
900HC440	Diffuser Cap also fits FlexiFit™ 405	10 Pack



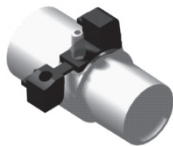
Elbow Kit

Product Code	Description	Quantity
900HC441	Elbow Kit - includes material, Cap & swivel	1 of Each



Silicone Seal

Product Code	Description	Quantity
400HC105	Oracle™ 452 Silicone Seal - Small	Each
400HC108	Oracle™ 452 Silicone Seal - Large	Each



Oxygen/Pressure Port Connector

Product Code	Description	Quantity
900HC452	Oxygen/Pressure Port Connector	10 Pack



Flexitubes

Product Code	Description	Quantity
400HC209	Oracle™ 452 Flexitube, Elbow & Vented	Each
400HC205	Oracle™ 452 Flexitube, Elbow and Non-Rebreathing Valve (Australia only)	Each

Oracle™ 452 Mask Spare Parts



Mask Headgear

Product Code	Description	Quantity
400HC300	Oracle™ 452 Headgear Accessory plus Clips	Each
400HC215	Oracle™ 452 Clips only	Each



Oxygen/Pressure Port Connector

Product Code	Description	Quantity
400HC506	Oracle™ 452 - No Headgear	Each



Nasal Plugs

Product Code	Description	Quantity
400HC204	Oracle™ 452 Nose Plugs Small, Medium, Large	1 of Each



Flexitubes

Product Code	Description	Quantity
400HC206	Vented Non-Rebreathing Valve	Each
400HC208	Non-Rebreathing Valve (Australia only)	Each

Fisher & Paykel Healthcare Directory

Manufacturer	Fisher & Paykel Healthcare Ltd 15 Maurice Paykel Place, East Tamaki, Auckland 2013 PO Box 14 348 Panmure, Auckland 1741, New Zealand Tel: +64 9 574 0100 Fax: +64 9 574 0158 Sales info: info@fphcare.co.nz
Australia	Fisher & Paykel Healthcare Pty Ltd Tel: +61 3 9879 5022 Fax: +61 3 9879 5232 Email: info@fphcare.com.au
Austria	Freephone (from within Austria only) Tel: 0800 29 31 23 Fax: 0800 29 31 22
Benelux	Fisher & Paykel Healthcare SAS Tel: +31 40 216 3555 Fax: +31 40 216 3554 Email: info@fphcare.fr
China	Fisher & Paykel Healthcare Ltd Tel: +86 20 3205 3486 Fax: +86 20 3205 2132 Email: info@fphcare.cn
France	Fisher & Paykel Healthcare SAS Tel: +33 1 6446 5201 Fax: +33 1 6446 5221 Email: info@fphcare.fr
Germany	Fisher & Paykel Healthcare GmbH & Co KG Tel: +49 7181 98599 0 Fax: +49 7181 98559 66 Email: info@fphcare.de
India	Fisher & Paykel Healthcare Ltd Tel: +91 80 4123 6041 Fax: +91 80 4123 6044 Email: sales.india@fphcare.com
Irish Republic	Tel: 1 800 409 011
Italy	Tel: +39 06 7839 2939 Fax: +39 06 7814 7709 Email: info@fphcare.it
Japan	Fisher & Paykel Healthcare KK Tel: +81 3 3661 7205 Fax: +81 3 3661 7206
Northern Ireland	Tel: 0800 132 189
Spain	Tel: +34 902 013 346 Fax: +34 902 013 379 Email: sales.spain@fphcare.com
Sweden	Fisher & Paykel Healthcare AB Tel: +46 8 564 76 680 Fax: +46 8 36 63 10 Email: info@fphcare.se
Switzerland	Tel: 0800 83 47 63 Fax: 0800 83 47 54
United Kingdom (EU Authorised Representative)	Fisher & Paykel Healthcare UK Ltd Unit 16, Cordwallis Park, Clivemont Road, Maidenhead, Berkshire SL6 7BU, UK Tel: +44 1628 626 136 Fax: +44 1628 626 146 Email: info@fphcare.co.uk
United States	Fisher & Paykel Healthcare Inc Tel: +1 800 446 3908 or +1 949 453 4000 Fax: +1 949 453 4001 Email: information@fphcare.com

www.fphcare.com